

CATALINA



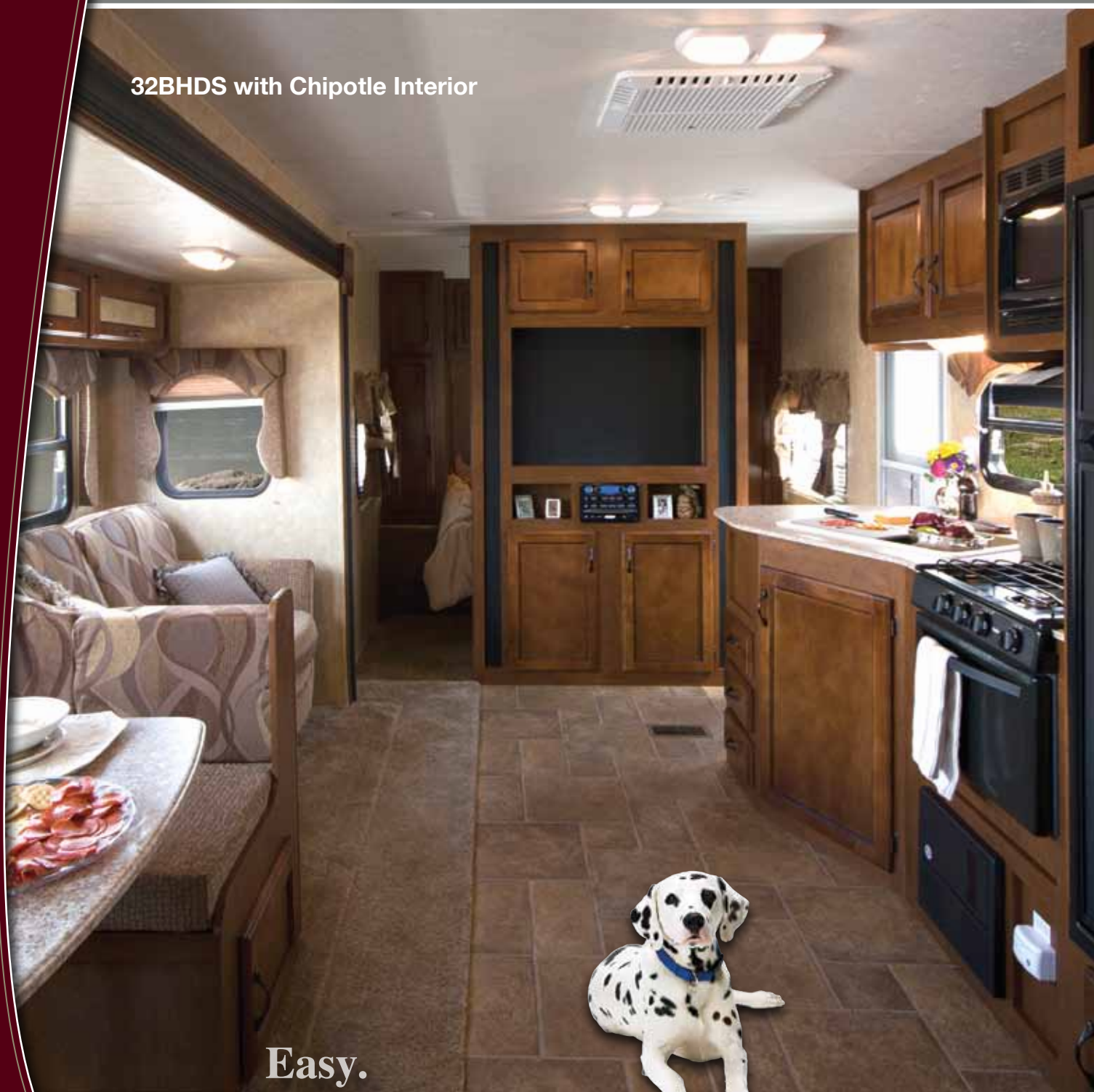
DELUXE EDITION

CATALINA DELUXE EDITION



...ALWAYS ON THE MOVE

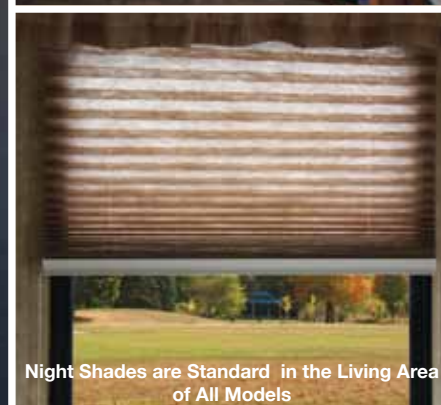
32BHDS with Chipotle Interior



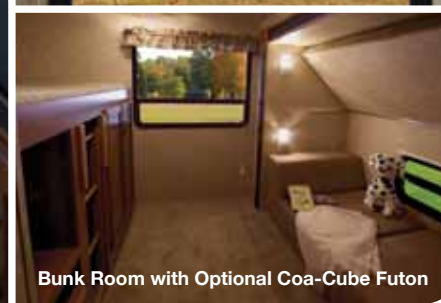
Stonecast 60/40 Sink with Extra Deep Basin and Pull-Out Sprayer Faucet. Covers Double as Cutting Boards



All Models have Abundant Kitchen Storage



Night Shades are Standard in the Living Area of All Models

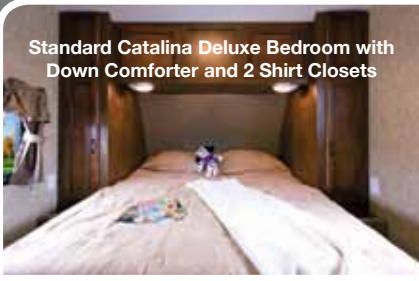


Bunk Room with Optional Coa-Cube Futon

Easy.

Coachmen Makes it Easy.
Easy to Use, Easy to Maintain, and Easy to Tow!

Standard Catalina Deluxe Bedroom with
Down Comforter and 2 Shirt Closets



25RKS with Bazinga Stone Interior

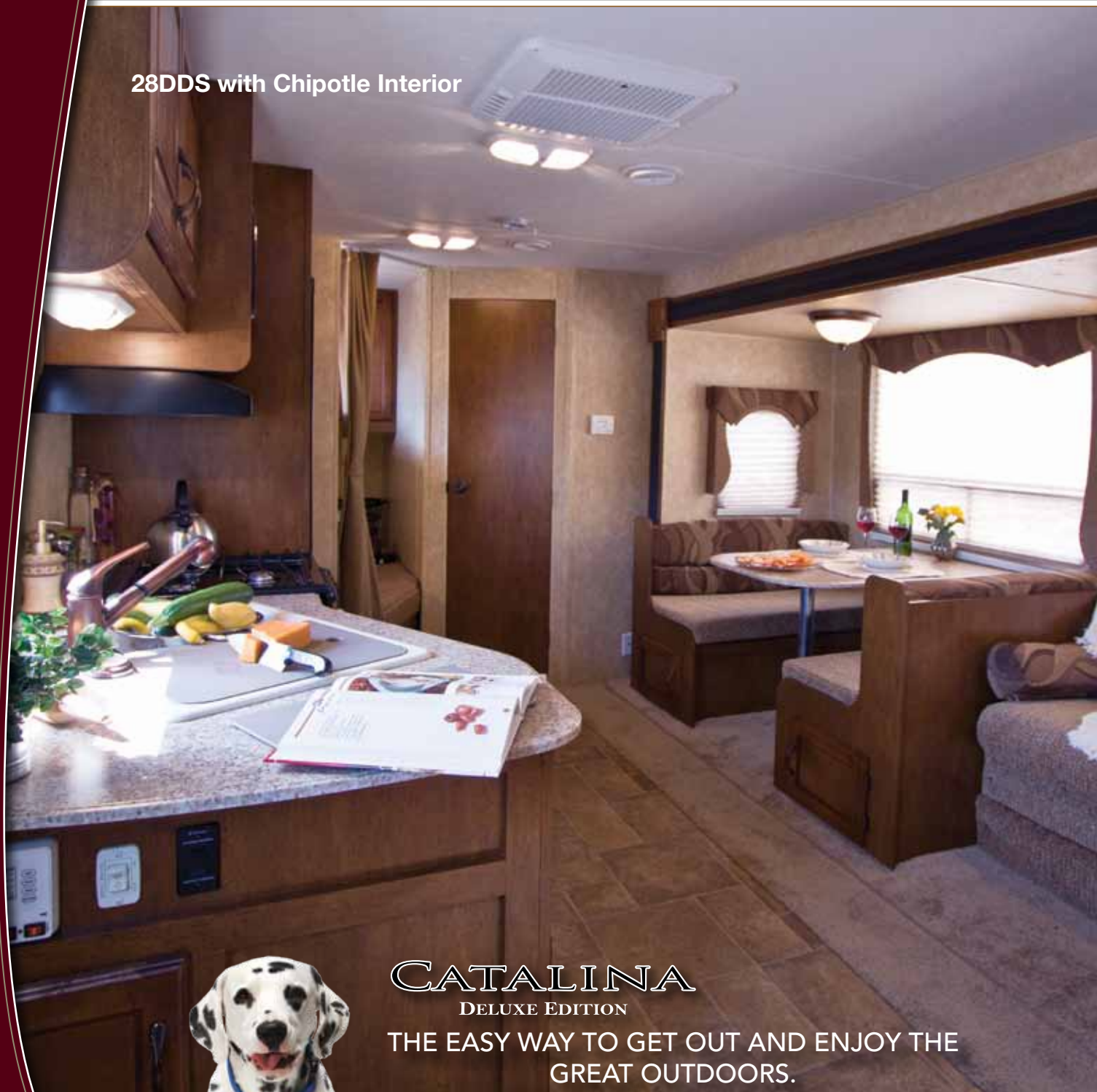


Neo Angle Shower with Glass Door
(Per Floorplan)



Coachmen RV has resurrected a familiar name: the Catalina. Bearing the popular Coachmen RV Branding from some years back, the Catalina covers the world of travel trailers with a starting line-up of VERSATILE models! With these choices designed to fit almost any budget, we feel the new Coachmen Catalina is the most aggressively priced travel trailer on the market. That means it's packed with Coachmen Quality, Value, Style, and Comfort! From the First Time Camper to the RV Enthusiast, the Catalina lineup is LOADED with Standard Features that would impress and satisfy any Buyer!!!

28DDS with Chipotle Interior



Double Down Bunk Beds with Outside Access
Easy Store Door on the 28DDS

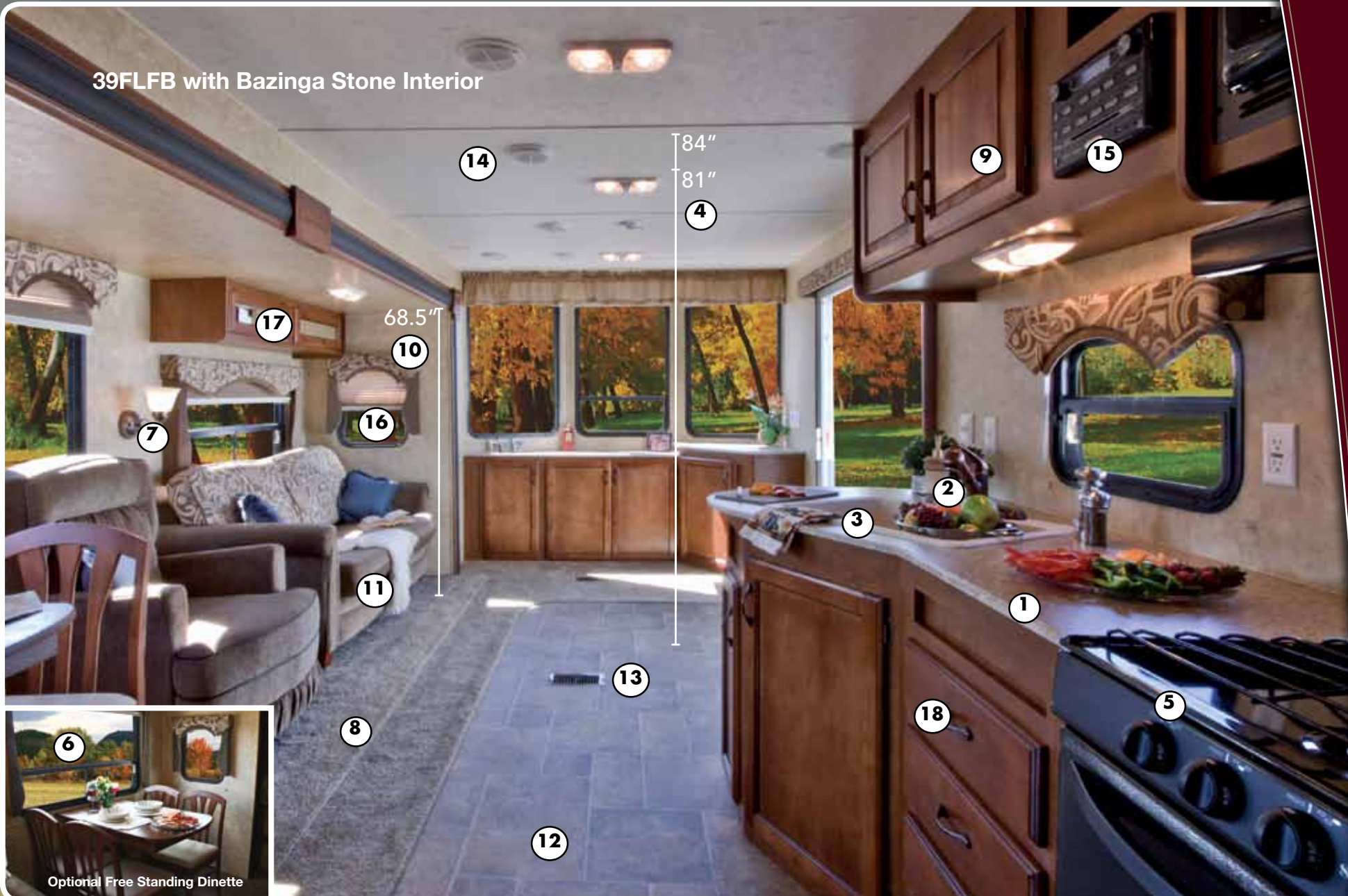


Spacious Shower and Tub Area with Foot
Flush Toilet and Medicine Cabinet

CATALINA
DELUXE EDITION

THE EASY WAY TO GET OUT AND ENJOY THE
GREAT OUTDOORS.

39FLFB with Bazinga Stone Interior



- | | | |
|--|---|---|
| 1. Thermal-Foil Countertops (NOT T-molded edge) | 7. Deluxe Reading Lights | 13. Floor Ducted Heat |
| 2. Pull-Out Sprayer Faucet | 8. Residential Style Carpet | 14. Roof Ducted AC |
| 3. Stonecast Sink with 60/40 Basin that is Thermal Resistant to 450 degrees Fahrenheit | 9. Solid Cognac Maple Raised Panel Doors | 15. AM/FM, CD/DVD Player with iPod® Docking Port |
| 4. 81" Interior Height Travel Trailers, 84" Destination Trailers | 10. 68.5" Slide Room Height | 16. Night Shades in Living Area |
| 5. Three Burner Range with Oven | 11. Storage Under Sofa. (N/A Hide-A-Bed) | 17. Overhead Storage with Gas Strut Assisted Doors |
| 6. Oversized Dinette Window for a Great View | 12. Tile Look Linoleum with 2 Year Warranty | 18. Full Extension Ball Bearing Metal Drawer Guides |

CATALINA STANDARD FEATURES

DELUXE EDITION



Screwed Cabinet Fascia with Lumber Core Stiles, NOT Stapled Particle Board like Most Brands. (MORE Strength and Durability)



Stonecast 60/40 Sink with Extra Deep Basin and Pull-Out Sprayer Faucet. Covers Double as Cutting Boards.



Thermo-Foil Countertops NOT Plastic T-mold Edge. (Will Not Shrink or Gap in Cold Weather)



Metal Ball Bearing Drawer Guides allow you to Access the whole Drawer and Will Provide Years of Dependable Service.



Night Shades Provide you with Complete Privacy.



Tile Look Linoleum, Non Slip, Easy to Clean, Cold Crack Resistant and Comes with a 3 Year Warranty.



6 Gal. DSI Gas/Electric Remote Operated Water Heater. (Fire up your Water Heater from Inside your Coach)



LP Quick Connect, Quickly and Easily Connect and Disconnect any Propane Accessories .



Custom Built-in TV Entertainment Center that is Cable Ready-Complete with Audio Inputs that Tie in Directly to the Interior Speakers.



AM/FM, CD/DVD Radio with Speakers and i-Pod® Docking Port. More Wattage for Your Cottage!!!



Exterior Camper Kitchen Standard on the 27FBCK optional on the 30BHS, 32BHDS & 39BHTS

Exterior Camper Kitchen Includes: High Pressure Outside Grill, Turn Table Microwave, 4.4 cubic foot Electric Refrigerator, and Sink with High Rise Faucet.

CATALINA CONSTRUCTION AND STANDARD EXTERIOR FEATURES

DELUXE EDITION



Certified Green
Builder by TR
Arnold and
Associates.

Coachmen
Recreational Vehicles



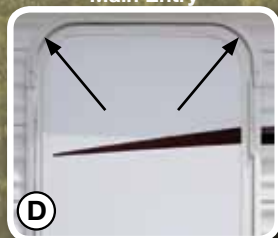
New Fiberglass Radius Front End,
(NOT a Metal Imitation)



Exterior Pass Thru Storage



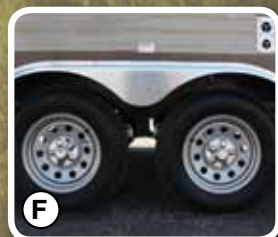
Swing Arm Grab Handle at
Main Entry



Smooth Fiberglass Radius
Entry Door



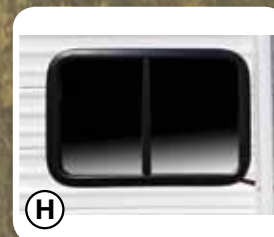
Four (4) Stabilizer Jacks



Radial Tires, Polished Aluminum
Fender Skirts and E-Coat Rims



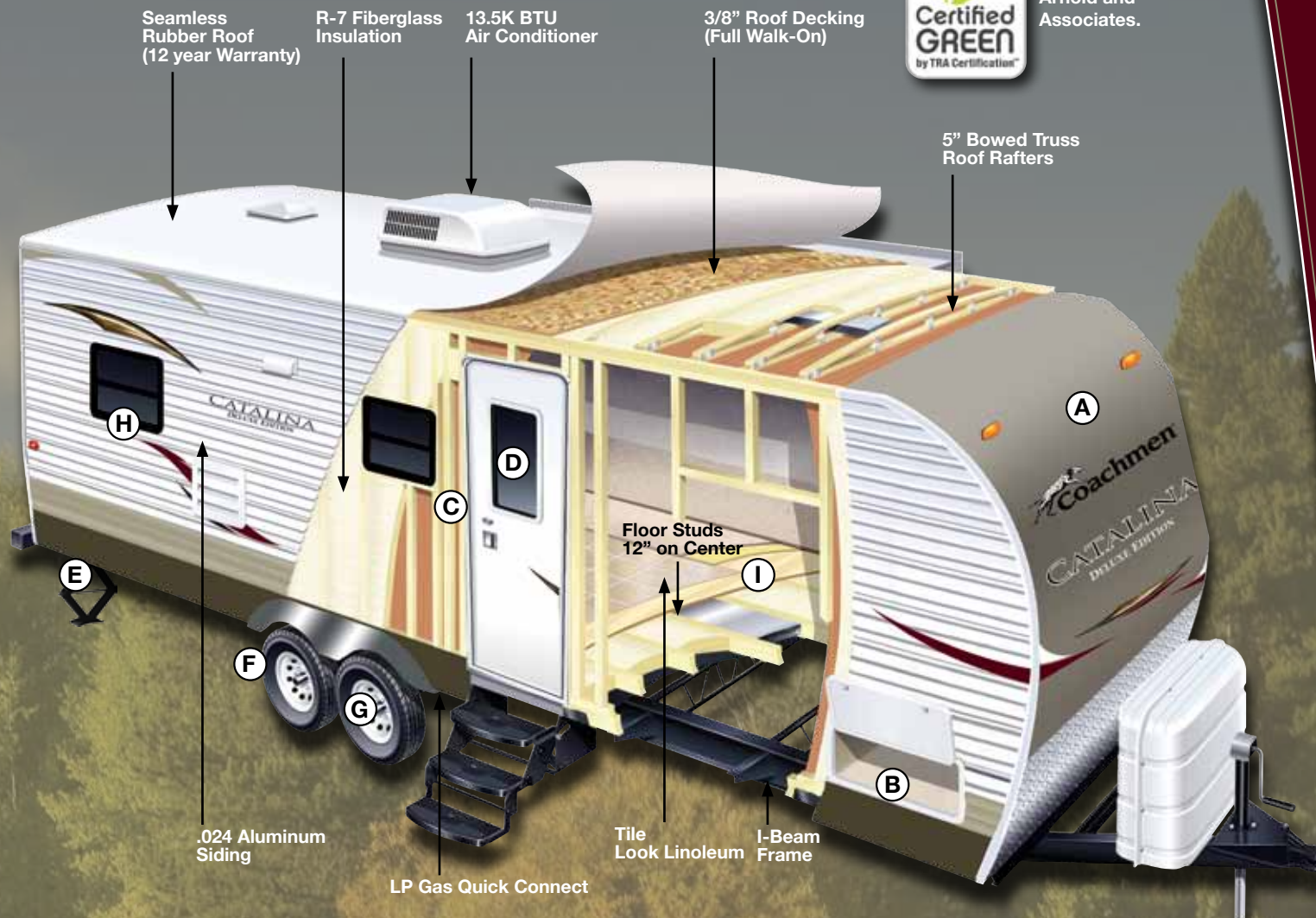
Superlube™ Axles for Fast
and Easy Lubrication



G55 Rated Tinted Black Framed
Windows with Safety Glass



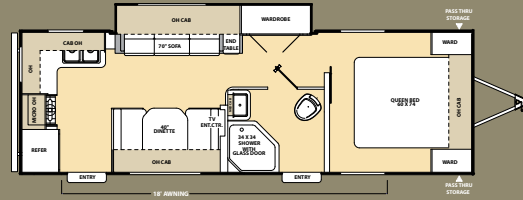
5/8" Tongue in Groove Plywood
Floor Decking-NOT OSB



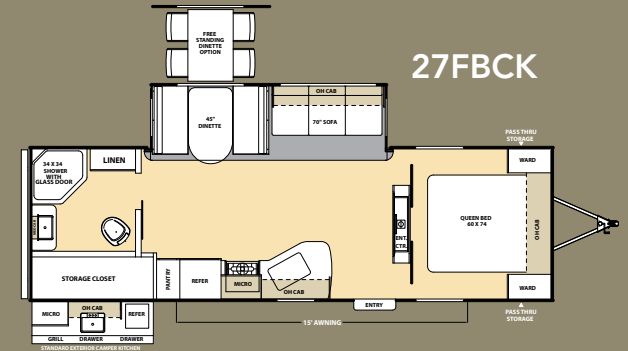
TRAVEL TRAILERS



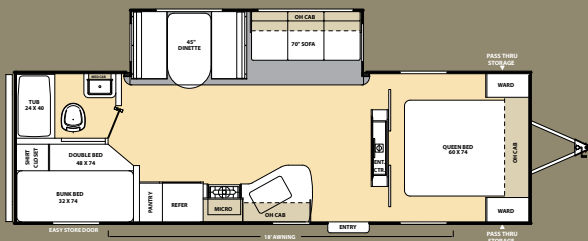
25RKS



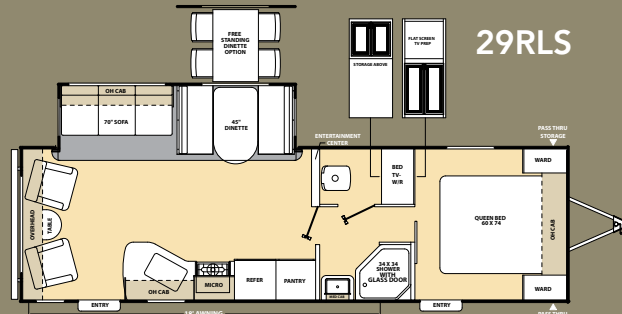
27FBCK



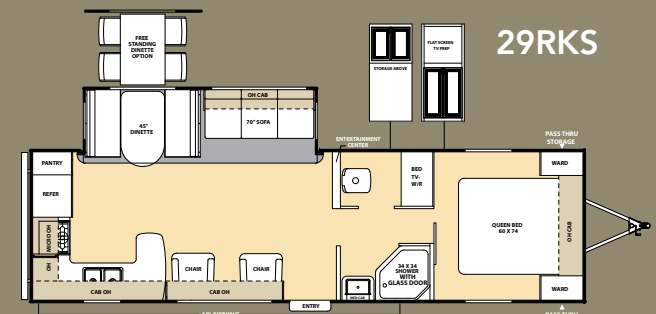
28DDS



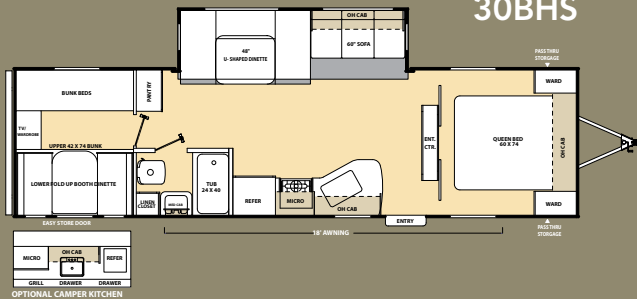
29RLS



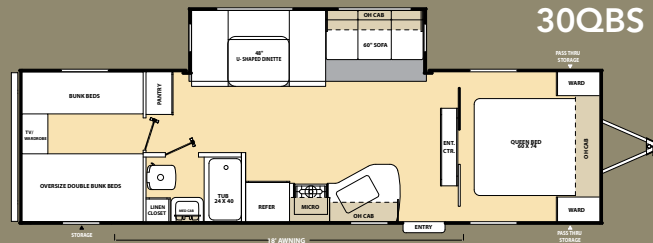
29RKS



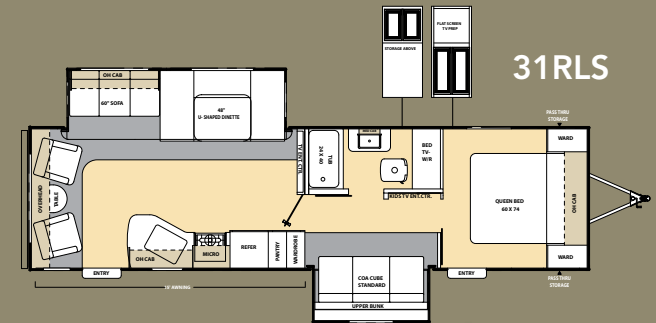
30BHS



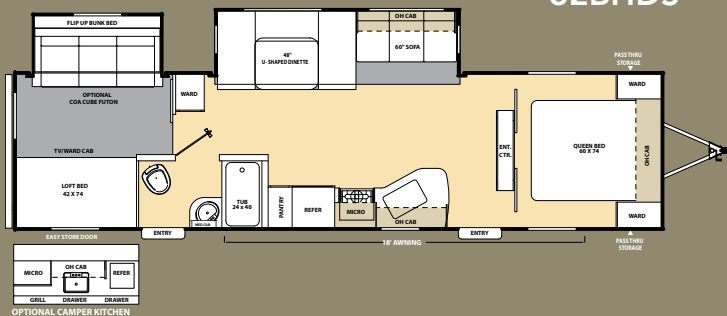
30QBS



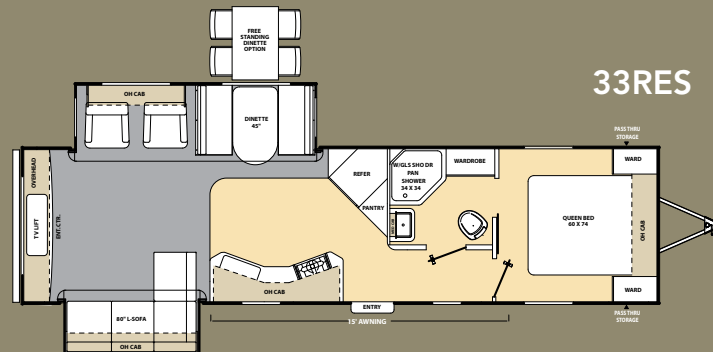
31RLS



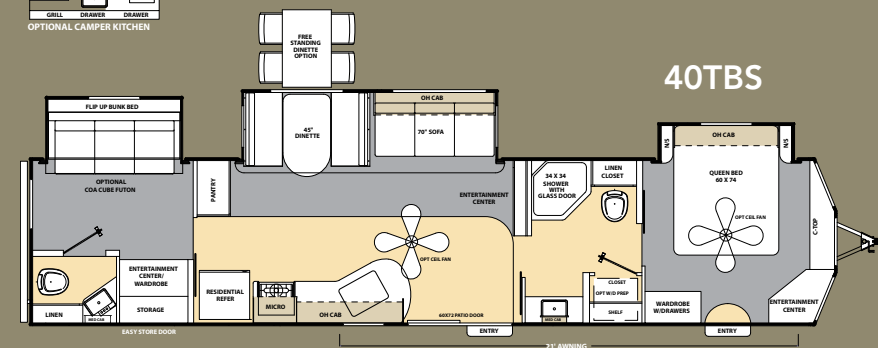
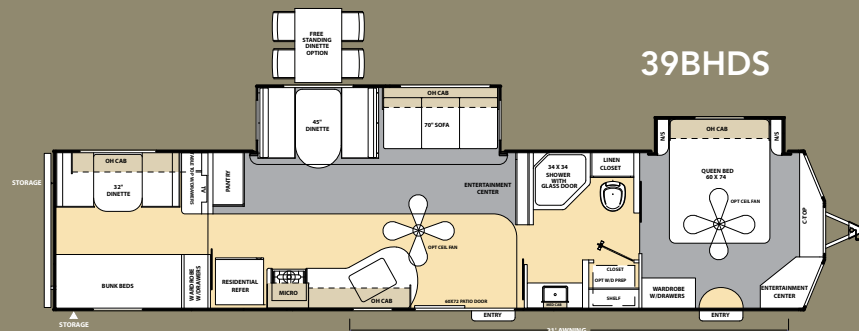
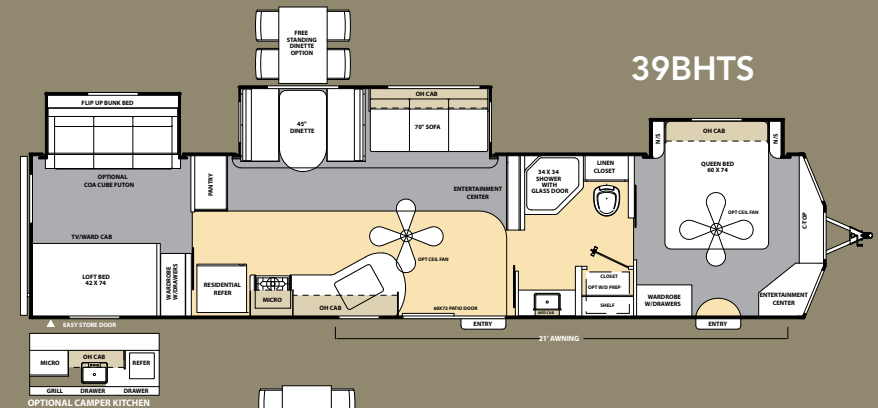
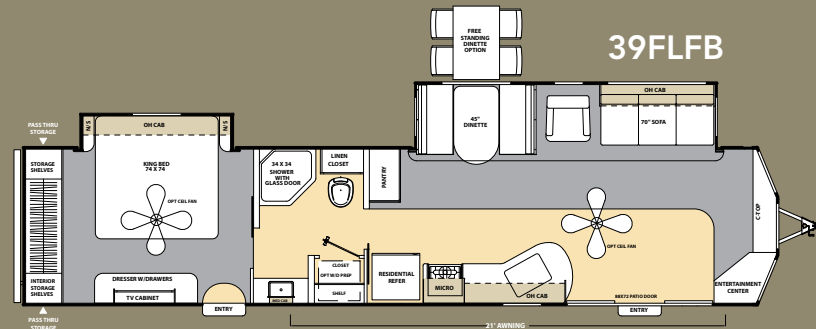
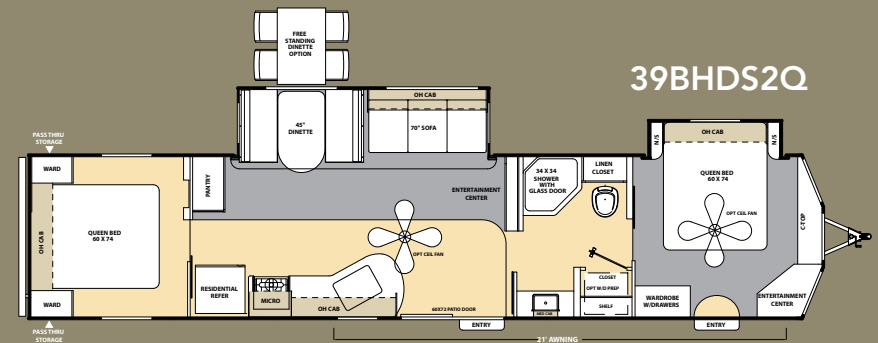
32BHDS



33RES



DESTINATION TRAILERS



Travel Trailer Specifications

[illegible]

Length includes bumper and hitch **70 (gal.) with Exterior Kitchen

Destination Trailer Specifications

Standard Features

- Cambered Structural Steel I-Beam Frame (With full width out riggers)
- 3/8" Fully Decked Walk-On Roof
- 2" X 3" Longitudinal Floor Joists On Approximately 12" Centers
- Full Extension Ball Bearing Drawer Guides
- Residential In-Floor Ducted Heat
- 81" Living Room Ceiling Height Travel Trailers, 84" Destination Trailers
- One-Piece, Seamless, Rubber Roof Material with 12 Year Warranty
- Easy-Trac Electric Slide Out(s)
- Wall Studs On 16" Centers
- 1/2" Plywood Dinette, Bed And Bunk Platforms
- Roof Rafters, Constructed Of Residential-Style Tapered 5" Trusses
- 5/8" Tongue & Groove Plywood Floor Decking
- R-7 Fiberglass Insulation In Sidewall, Roof & Floor
- .024" Aluminum Exterior Skin with .030 skirt metal
- Tile Look Linoleum Flooring

Standard Heat, Power And Water Equipment

- Roto-Cast Holding Tanks
- 30K BTU Auto-Ignition Furnace With Wall Thermostat
- 110v G.F.C.I. Protected Exterior Receptacle
- 6-Gal. Gas Water Heater
- 30-Amp Electrical Service W/Deluxe 110v 45-Amp Power Converter Travel Trailers, 50-Amp/65-Amp Destination Trailers
- 12v Demand Water Pump
- Systems Monitor Panel
- Hook-Up For City Water
- Double 30-Lb. Propane Gas Bottles W/ Regulator

Standard Bathroom Equipment

- Skylight Above Bath and Shower
- Shower Curtain With Curved Shower Track,
- Neo-Angle Shower with Glass Doors - 25RKS, 27FBCK, 29RLS, 29RKS, 33RES and All Destination Models
- Towel Ring (2) & Toilet Paper Holder
- Marine Toilet With Foot Flush
- Large Sink In Bathroom
- Medicine Cabinet W/ Mirror

Standard Kitchen Equipment

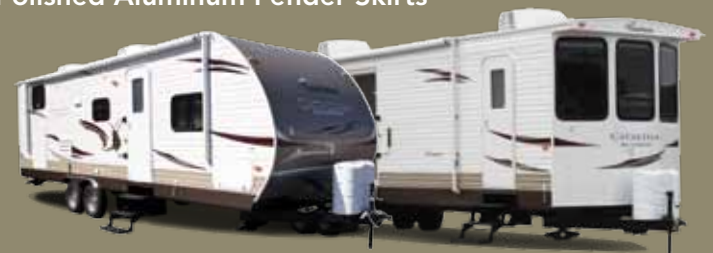
- Single Piece Countertop With Seamless Edge
- Stonecast Residential Style Sink with Extra Deep 60/40 Double Bowl and Single Lever Pull Out Sprayer Faucet
- Gas Electric Double Door Refer Travel Trailers, 18 cubic foot Residential Refer with Ice maker on Destination Trailers
- 3-Burner Range W/ 9,000 BTU Superburner™
- Range Hood W/Light And Exhaust Fan
- Access Doors To The Dinette Booth
- Glued & Screwed Cabinet Construction
- Easy-View Extra Large Picture Window At Dinette
- Large Pedestal Dinette Table
- Large U-Dinette - Some Models
- Silverware Drawer

Standard Bedroom Equipment

- Premium Mattress
- Under-Bed Storage, Bed Lifts Easily On Gas Struts
- Deluxe Window Treatments
- Quilted Residential Down Comforter and Headboard
- 2 Shirt Wardrobes

Standard Exterior Equipment

- Dark Tinted (G55) Black Framed Windows W/Safety Glass
- Swing Arm Entry Assist Handle at Main Entry
- Radius Entry Steps
- SUPERLUBE™ Easy Maintenance Axles
- Silver E-Coat Wheels
- Painted Bumper W/Drain Hose Carrier And End Caps
- Radius-Cornered Fiberglass Entrance Door
- Painted Bottom Radius Skirting
- Amber Patio Light w/Inside Switch
- Baggage Doors Are Lockable And Radius-Cornered
- Grab Handle at Second Entry (Per Floorplan)
- Rain Guttering, Molded W/Drip Spouts
- Easy-Connect Exterior LP Port - Easy Access for Exterior LP Grill or Appliance Hook-Up (All Models)
- Polished Aluminum Fender Skirts



Standard Interior Equipment

- Cognac Maple Cabinets w/ Black Accent Trim
- Jack Knife Convertible Sofa with Bolster Cushions
- Residential Furniture
- Crank-Up Digital TV Antenna With Signal Booster
- Cable Hook-Up With RG-6 Coax Cabling
- Marine Grade Table Leg And Pedestal Base
- Valance & Lambrequins Window Treatment
- Large 45" Dinette Tabletop
- Night Shades in Living Area

Standard Safety Equipment

- Propane Alarm
- Breakaway Switch
- G55 Rated Safety Glass Windows
- Dead-Bolt Lock On Entrance Door
- Dual Hitch Safety Chains
- Smoke Alarm
- Multiple Egress Windows
- Fire Extinguisher
- Carbon Monoxide Alarm
- TRA Certified Green

Customer Value Package (Mandatory Option)

- 13.5K BTU Ducted A/C
- Heated-Enclosed Underbelly
- Double Door Refrigerator
- Microwave Oven
- Multi-Media Premium Sound System AM/FM/CD/DVD Player, Antenna and iPod® Input Jack, Cable Interior/Exterior Hook-Ups
- A&E™ Patio Awning
- EvenCool™ Ducted Central AC with Wall Thermostat & Louvered-Directional Ceiling Vents
- Water Heater By-Pass Winterization Kit

Plus Package

- 30lb Propane Gas Bottles (2) W/ABS Cover
- Outside Shower
- Raised Panel Kitchen Overhead Doors
- 6-Gal. Electronic Ignition (DSI) Gas/Electric Water Heater

Comfort Package

- ABS Shower Surround
- Gas Oven
- Sink Covers/Cutting Boards Combination (2)
- Stabilizer Jacks

Additional Options

- Exterior Camper Kitchen - STD. 27FBCK (Optional Per Floorplan)
- Free Standing Dinette - (Per Floorplan)
- Front Diamond Plate (Mandatory On Travel Trailers)
- Spare Tire And Tire Carrier W/Vinyl Tire Cover
- CSA Standards
- Coa-Cube Futon Bed IPO Lower Bunk - 32BHDS Only
- Hide-A-Bed Sofa (Per Floorplan)
- Outside Marine Grade Speakers
- 15K BTU A/C
- Secondary 13.5 BTU A/C (Destination Trailers Only)
- Power Electric Awning
- Living Room Ceiling Fan (Destination Trailers Only)
- Bedroom Ceiling Fan (Destination Trailers Only)
- Power Package- Electric Awning and Power Tongue Jack

DECOR OPTIONS

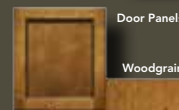
BAZINGA STONE



DESERT FERN



CHIPOTLE



Door Panels

Woodgrain



Bedroom Feature Fabric

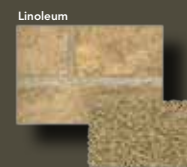
Bedroom Accent Fabric

COGNAC MAPLE



Wall Panel

Countertop



Linoleum

Carpet



FREE ONE YEAR MEMBERSHIP

Big benefits for new owners

Coachmen is proud to sponsor the largest manufacturer sponsored camping club in North America ... Coachmen Owners' Association (COA). COA provides you a world of ways to enjoy your RV. This is FUN ON OVERDRIVE and provides: Free Trip Routing, Exciting Tours & Rallies, Free Campground Directory, Local/State Club Activities, Easy RVing Magazine Free, Theme Park Discounts, Fuel Discounts, Free onebigplanet® Memberships with discounts at 180,000 merchants and Much More! Every new Coachmen RV buyer is eligible for a 1 Year **FREE** membership in the Coachmen Owners' Association. It all adds up to an easy ownership experience!

Travel Easy™ Roadside Assistance

RVing is easier with Coachmen's Travel Easy™ Roadside Assistance provided



FREE the first year of ownership to those who purchase a New Coachmen RV. Administered by Coach-Net, this service provides you with 24/7 operational, technical and emergency road service coverage. Also included is towing, fuel delivery, jump starts, lockout service, tire changes, mobile mechanic and unlimited technical assistance. Anywhere. Anytime. Travel Easy™ is the security of knowing that help is an easy phone call away.



A division of Forest River, Inc.

Coachmen RV
Catalina Division
423 N. Main St./P.O. Box 30
Middlebury, IN 46540



Forest River, Inc. encourages our customers to purchase their Forest River products whenever possible for the following reasons:

It is the goal of Forest River, Inc. that all of our RV owners fully enjoy the RV experience and that customer satisfaction meets or exceeds their expectations!

- 1) Forest River, Inc. dealers are independently owned and operated businesses so priority service and scheduling is at their discretion and is often provided to customers that purchased their unit at that dealership.
- 2) Purchasing locally allows customers to establish meaningful relationships with a dealer, enhancing the RV experience through assistance with product questions, user tips or RV regulations for your state or country, and much more!
- 3) Canadian customers must meet requirements to bring an RV purchased out of the country to their home. These requirements may involve additional inspections and certifications, taxes and fees. Your local Canadian Dealer is a professional at meeting these requirements.
- 4) Scheduling timely warranty repairs and adjustments through a local dealership provides far greater flexibility and convenience to you, the customer!



To learn more about Coachmen RV and our products and see how Coachmen is making the easy life easier, visit www.coachmenrv.com

All information contained in this brochure is believed to be accurate at the time of publication. However, during the model year, it may be necessary to make revisions and Coachmen reserves the right to make all such changes without notice, including prices, colors, materials, equipment and specifications as well as the addition of new models and the discontinuance of models shown in this brochure. Therefore, please consult with your Coachmen dealer and confirm the existence of any materials, design or specifications that are material to your purchase decision.



Your Catalina Deluxe Dealer



Learn More

Scan this barcode using a QR Reader on your smart phone to learn more about Forest River.



A Berkshire Hathaway company.

© Copyright 2012 Coachmen RV, a Division of Forest River Inc., A Berkshire Hathaway company.
All Rights Reserved