

# Dutchmen

TRAVEL TRAILERS & FIFTH WHEELS



**NEW LITE HALF-TON  
TOWABLE MODELS &  
DESTINATION TRAILERS!**



THE INDUSTRY LEADER IN QUALITY & VALUE - FOR OVER 20 YEARS!

# Dutchmen



For over 20 years, Dutchmen has been a best selling brand because of our commitment to high quality and value. We are focused on providing innovative products that are loaded with standard equipment and unique features at a great price. Plus, Dutchmen's years of experience and attention to detail in design, construction and quality is why our customers return when it is time for their next recreational vehicle.

Dutchmen - The industry leader for over 20 years!



Lite 25C-GS in Talbot Driftwood



## Dutchmen Lite Travel Trailers

Aerodynamic and easy to tow, Dutchmen Lite features non-slide and small slide floorplans ranging from 23' to 33'. Base weights start at 4,100 pounds!





**DUTCHMEN**  
 GREAT NAME!  
 GREAT FLOORPLANS!  
 GREAT VALUE!

## Dutchmen Large Slide Travel Trailers

Featuring bunkhouse, couples coaches & rear lounge floorplans from 26' to 31'.



31B-DSL in Nirvelli Harvest

38BP-DSL



## Dutchmen Destination Trailers

Featuring 31' to 38' lake and seasonal campground trailers with residential appliances.

# MORE STANDARD FEATURES - MORE VALUE

2 Skylights in Every  
Floorplan



Bathroom & Kitchen

Solid Hardwood  
Cathedral Doors



Mortise & Tenon Construction

Steel Roller Drawer  
Hardware



"RV 800"

Dry Camping  
Stereo System



12V Jensen AM/FM/CD with  
Interior & Exterior Speakers

Diamond Plate Rock  
Guard



Protects Your Investment

Foot Flush Toilet



Aqua Magic

Walk-On 5" Truss  
Roof Construction



One-Piece EPDM Rubber Finish

Nitrogen Filled 15"  
Tires



Safety & Longer Life

Acu-Weight  
Certification



All Units Weighed at Factory -  
Real Weights!

## Upgrade Your Dutchmen with the Optional Fiberglass Sidewall Package



Dutchmen Lite with Fiberglass Sidewall Package Option  
and Luxury Package Option

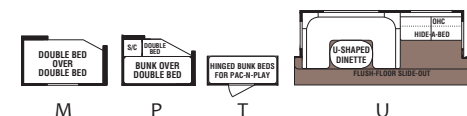
A Fiberglass Sidewall Package option is available on all Dutchmen models. The Fiberglass Sidewall Package option enhances the appearance of the trailer and protects it from hazards of the road. The option replaces the standard corrugated aluminum exterior siding.

Fiberglass sidewalls, normally available only in higher priced trailers, are available from Dutchmen. Another great feature at value prices!

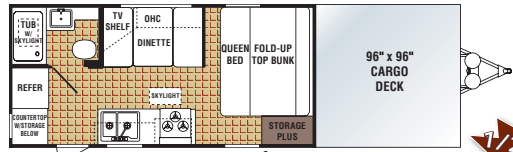


Dutchmen Lite with Standard Aluminum Sidewalls

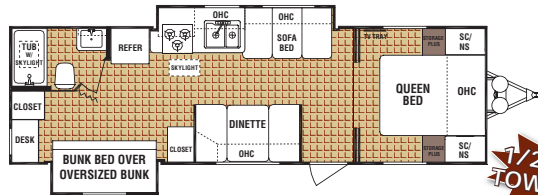
## FLOORPLAN OPTIONS



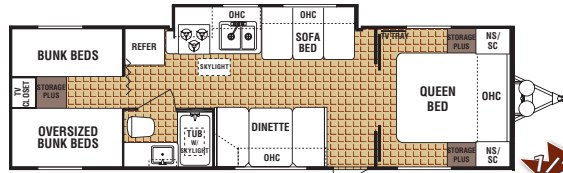
# LITE TRAVEL TRAILERS



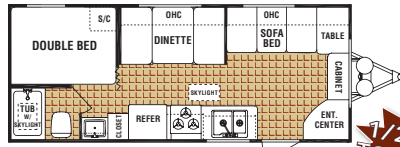
16DXRV



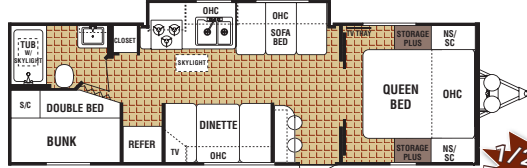
28B-GS



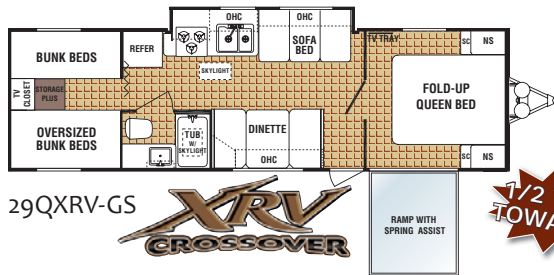
29Q-GS Available option: T



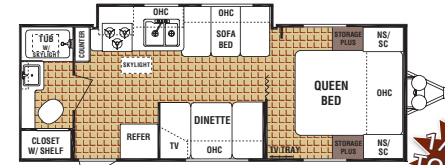
18F Available option: P



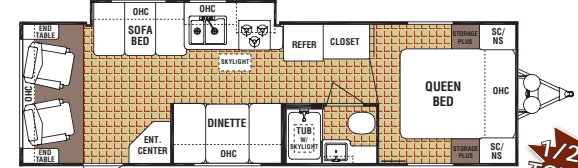
28G-GS



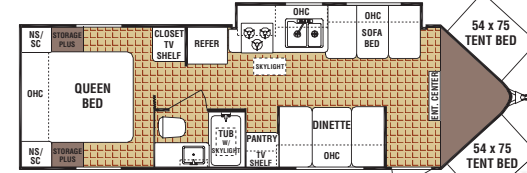
29QXRV-GS



25C-GS



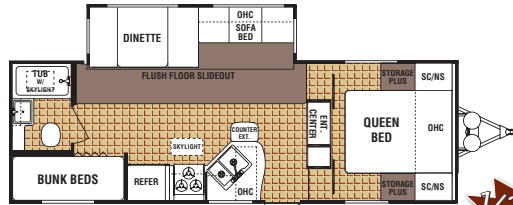
28L-GS



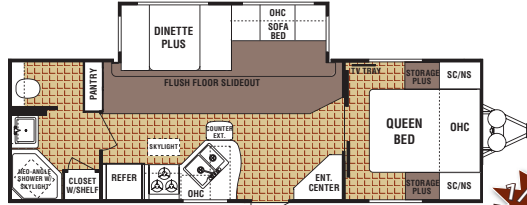
29VNT



# LARGE SLIDE TRAVEL TRAILERS



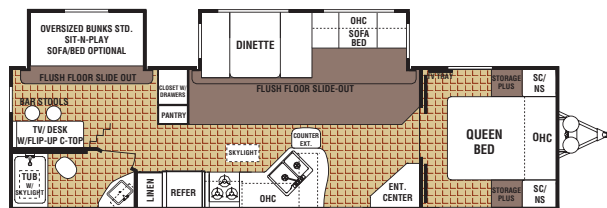
26B-DSL Available options: T, U



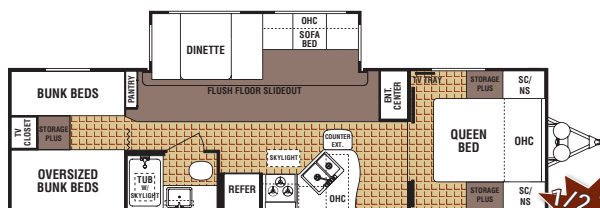
26F-DSL



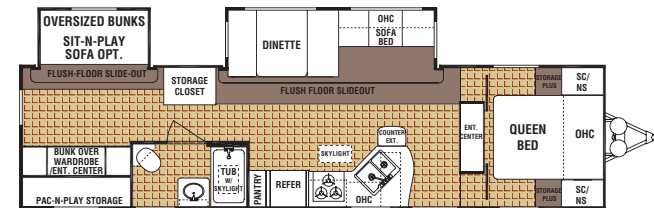
26L-DSL



30S-DSL Available options: T, U, optional bath entry

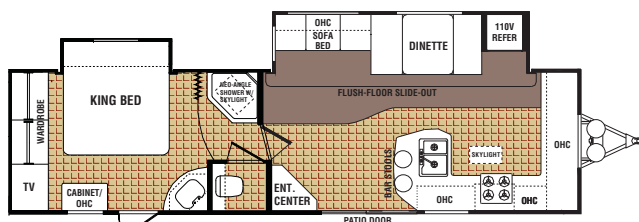


31B-DSL Available options: T, U

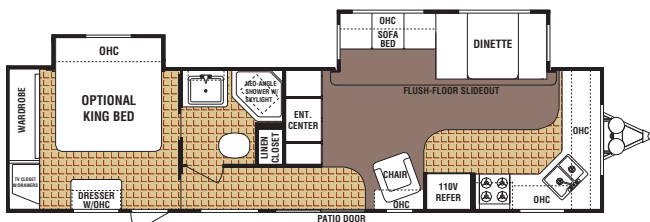


31N-DSL Available options: U, shown with optional bath entry

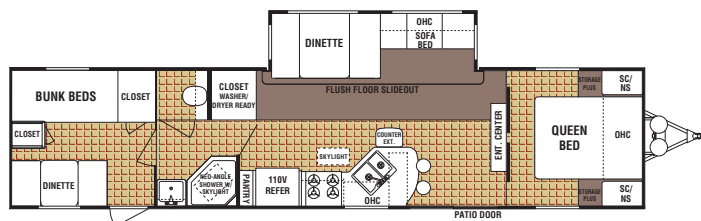
# DESTINATION TRAILERS



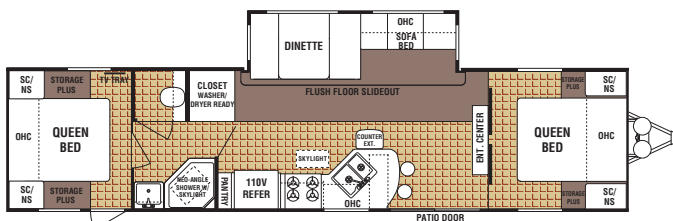
31GP-DSL-BS



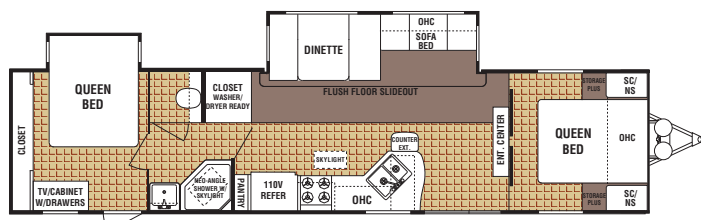
36FP-DSL-BS Shown with optional king bed slide suite



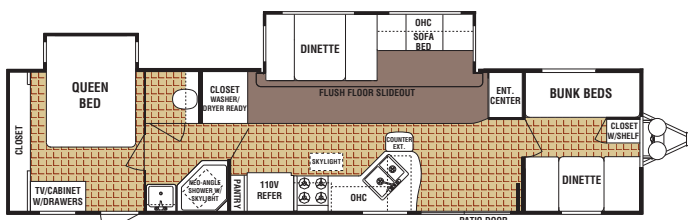
38BP-DSL Floorplan #1 Available options: U  
Shown with front queen & rear bunks/dinette



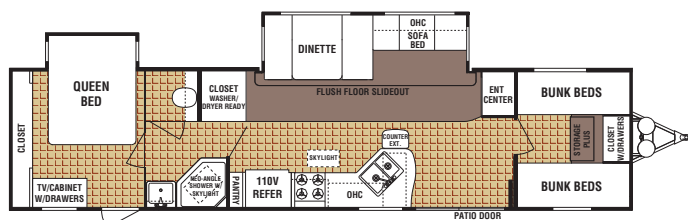
38BP-DSL Floorplan #2 Available options: U  
Shown with queen rear bed & queen front bed



38BP-DSL Floorplan #3 Available options: U  
Shown with queen rear bed slide & queen front bed



38BP-DSL Floorplan #4 Available options: U  
Shown with queen rear bed slide & front bunks/dinette

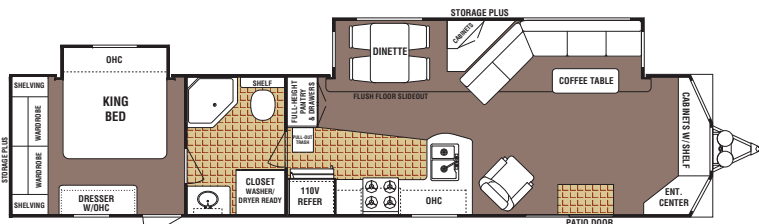


38BP-DSL Floorplan #5 Available options: U  
Shown with queen rear bed slide & front quad bunks

## All Destination Trailers Feature:

- 110V. Refrigerator
- Sliding Glass Door
- Residential Range
- Gas/Electric/DSI Water Heater

## New Park Model from Dutchmen!



40FLP-DSL



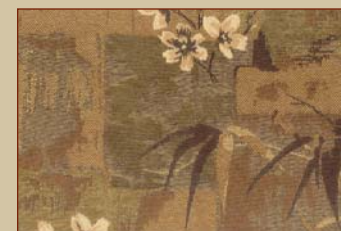
## Decor Choices



Island Breeze



Talbot Driftwood



Novos Pine



Nirvelli Harvest

Visit  
[www.Dutchmen-RV.com](http://www.Dutchmen-RV.com)  
for detailed specifications on  
Park Models from Dutchmen

# LUXURY UPGRADE PACKAGE

Upgrade your Dutchmen with the optional Luxury Upgrade Package including:

- 6 Panel solid wood refrigerator insert

- Pillow top mattress
- Aluminum rims

- Power awning
- DVD player with theater sound

- Flat screen LCD TV
- Night shades



## WEIGHTS & SPECIFICATIONS

	Floorplan	Base Weight	Hitch Dry Weight	Cargo Capacity	Exterior Length	Exterior Height w/AC	Fresh Water Capacity (Gal.)	Grey Water Capacity (Gal.)	Black Water Capacity (Gal.)	Furnace Size (BTU's)
Lite Travel Trailers	* 16DXRV	4746	400	3060	30'	10' 8"	30	42	42	18,000
	* 18F	4076	466	3624	23' 5"	10' 4"	30	42	42	25,000
	* 25C-GS	4765	466	2935	26' 1"	10' 4"	30	42	42	25,000
	* 28B-GS	5775	722	1925	31' 3"	10' 4"	30	42	42	30,000
	* 28G-GS	5368	619	2332	29' 11"	10' 4"	30	42	42	30,000
	* 28L-GS	5368	619	2332	31' 1"	10' 4"	30	42	42	30,000
	* 29Q-GS	5661	606	2120	31' 8"	10' 4"	30	42	42	30,000
	* 29QXRV	5911	710	1789	31' 8"	10' 4"	30	42	42	30,000
	* 29VNT*	6210	812	1490	33'	10' 4"	30	42	42	30,000
Large Slide Travel Trailers	* 26B-DSL	6211	939	3469	28' 5"	10' 11"	46	42	42	30,000
	* 26F-DSL	6275	818	3405	29' 9"	10' 11"	46	42	42	30,000
	* 26L-DSL	6032	561	3648	29' 9"	10' 8"	46	42	42	30,000
	30S-DSL	7640	891	3536	33' 11"	10' 11"	46	42	42	34,000
	* 31B-DSL	7018	965	2662	33' 4"	10' 11"	46	42	42	34,000
	31N-DSL	8093	1237	1587	35' 8"	10' 11"	46	42	42	34,000
Destination Trailers	31GP-DSL-BS	7706	1067	1984	34' 11"	11'	46	42/42	42	34,000
	36FP-DSL	7760	1084	3410	37' 7"	11'	46	42/42	42	34,000
	38P-DSL #1	8143	1270	3557	39' 2"	11'	46	42/42	42	34,000
Park Model	40FLP-DSL	9783	1111	1393	42' 6"	12' 10"	60	42/42	42	34,000



\*Consult your vehicle owner's manual for maximum towing capacity before purchasing a recreation vehicle.

Vehicle loading - Every effort has been made to provide the greatest number of options for the recreational vehicle owner. Along with these choices comes the responsibility to manage the loads that are imposed by the choices that they remain within the manufacturer's specified chassis weight limits. Do not overload the recreational vehicle. Dry weight is the weight of the unit with standard run features. Some optional equipment not included. Net carrying capacity (NCC) is determined by subtracting unloaded vehicle weight (UVW) from gross vehicle weight (GVWR) and includes fluids, options and cargo. Liquid capacities and weights are approximations only.

Warning - This information is intended as a guide only. Weights of individual vehicles may vary. Consult your owner's manual for complete loading, weighing and towing instructions.

Vehicles are designed for recreational use only and not intended for use as a primary residence.

\* Half-Ton Series

\*29VNT only available with exterior Fiberglass Sidewall Package

# DUTCHMEN STANDARD FEATURES & OPTIONS

Lite	DSL	Destination	
			<b>Interior Features</b>
•	•	•	Solid hardwood mortise and tenon jointed cabinet doors
•	•	•	Solid wood drawers
•	•	•	Premium residential steel drawer roller hardware
•	•	•	Designer brushed nickel cabinet door & drawer hardware
•	•	•	AM/FM/CD Stereo with 4 interior speakers and 2 exterior speakers
•	•	•	13.5 BTU roof air conditioning
•	•	•	A&E patio awning
•	•	•	TV antenna with signal booster, cable & satellite hook-up
•	•	•	110 Volt interior and exterior duplex receptacles
•	•	•	Ducted air conditioning (most models)
•	•	•	Large picture window at dinette
•	•	•	Central monitoring system - tanks and battery
	•	•	Residential grade Living Room carpeting with pad (see floorplans)
•	•	•	Premium vinyl flooring
•	•	•	6 gallon quick recovery gas/electric/DSI water heater with bypass kit
•	•	•	Premium 12 volt water pump
•	•	•	Forced air, direct ignition furnace with wall thermostat
•	•	•	Floor ducted heating (most models)
•	•	•	Electronic power converter with built-in battery charger
			<b>Living Room Features</b>
•	•	•	Premium residential furniture
•	•	•	Large slide-out overhead cabinets
•	•	•	Premium slide-out fascia
•	•	•	Designer window valances with miniblinds
	•	•	Larger "Dinette Plus" eating areas
•	•	•	12 Volt lights over dinette
•	•	•	Jack knife sofa bed
	•	•	Flip-over sofa bed
			<b>Kitchen Features</b>
•	•	•	Large Norcold double door gas/electric refrigerator
	•	•	Large 110 Volt residential refrigerator
•	•	•	Power range hood with 12 volt light and exhaust fan
•	•	•	Extra large, double bowl sink with high rise faucet
•	•	•	Oversized storage drawers with metal drawer guides
•	•	•	Skylight in galley
•	•	•	3 Burner range with oven (auto ignition)
	•	•	4 Burner residential range with oven (auto ignition)
•	•	•	Microwave oven
•	•	•	Countertop extension where possible (see floorplans)

Lite	DSL	Destination	
			<b>Bedroom Features</b>
•	•	•	TV tray in bedroom
•	•	•	Lift-up bed platform with storage below
•	•	•	Designer bedding package with bedspread and headboard
•	•	•	Reading lights
•	•	•	Inner-spring mattress
•	•	•	Privacy curtain (see floorplans)
•	•	•	Sliding bedroom doors (see floorplans)
			<b>Bathroom Features</b>
•	•	•	ABS tub & shower surround
•	•	•	Skylight over tub or shower
	•	•	Glass shower door (Neo-angle showers)
•	•	•	Shower curtain (Tubs)
•	•	•	Hardwood medicine cabinet with mirror
•	•	•	12 Volt power exhaust roof vent in bath
•	•	•	GFI protected 110 volt duplex receptacles
•	•	•	Aqua Magic foot flush toilet
			<b>Exterior Features</b>
•	•	•	Aerodynamic front profile with lower diamond plate rock guard (TT's)
•	•	•	3 5/8" Thick floor structure with water resistant underbelly
•	•	•	5" Thick truss style tapered "walk-on" roof
•	•	•	1 Piece seamless EPDM rubber roof (12 year manufacturer rubber warranty)
•	•	•	8' Wide floorplans
•	•	•	A&E patio awning
•	•	•	Extra deep easy-folding entry steps
•	•	•	Rear bumper with sewer hose storage
•	•	•	Extra large holding tanks
•	•	•	30 Pound LP bottles
•	•	•	Deluxe ABS LP bottle cover with quick fill panel
•	•	•	Key-locking, radius corner exterior "Storage Plus" compartments
•	•	•	30 Amp power cord with storage compartment
	•	•	30 Amp detachable power cord with storage compartment
•	•	•	Heavy duty steel I-beam frame
•	•	•	Fiberglass insulation
•	•	•	Easy Lube axles
•	•	•	Stabilizer jacks
Some features may be part of the Value Added Package - See dealer for details			

Lite	DSL	Destination	
			<b>Optional Features</b>
•	•	•	Laminated Fiberglass Sidewall Package
•	•	•	Luxury Upgrade Package
•	•	•	Pac-n-Play storage
•	•	•	Executive chairs IPO standard swivel chairs (see floorplans)
•	•	•	Exterior hot and cold water shower/wash station
•	•	•	Dark tint safety glass windows
•	•	•	Power tongue jack (TT's)
•	•	•	Spare tire with carrier
•	•	•	Flat screen LCD TV
•	•	•	DVD player with theater sound system
•	•	•	Sink and stove cover
•	•	•	Residential grade bedroom carpeting with pad
	•	•	Residential grade carpeting with pad in 2nd bedroom
	•	•	10 Gallon gas/electric water heater with DSI
	•	•	Free-standing dinette
	•	•	U-shaped dinette (see floorplans)
	•	•	Rear ladder
	•	•	Deluxe entry assist handle
	•	•	15,000 BTU A/C - ducted
	•	•	Fantastic power roof vent - galley or bedroom
	•	•	8 Cubic foot refrigerator
	•	•	Hide-a-bed sofa
	•	•	Phone/data jack
	•	•	End table
	•	•	Six panel solid wood refrigerator insert
	•	•	Bi-fold shower door for tub
	•	•	26" Key-locking entry door IPO sliding glass door
	•	•	Washer/dryer and 2nd AC prep, with 50 Amp service and 10 gallon water heater (38BP-DSL)
	•	•	50 Amp service with detachable power cord and 2nd AC prep (36FP-DSL)
See dealer for additional options			

Visit us on the web for  
**MORE PHOTOS, NEW FLOORPLANS,  
 WARRANTY INFORMATION & MORE!**  
**www.DUTCHMEN-RV.com**

**YOUR LOCAL DEALER**

Product information, specifications, and photography in this brochure were as accurate as possible at time of printing. Photographs may contain some features that are optional on your vehicle. Since we continually strive to improve our products, actual products may differ. Prices and specifications are subject to change without notice. All capacities are approximate and dimensions are nominal. Some features shown are optional and may be different or unavailable in Canada. Vehicles are designed for recreational use only and not intended for use as a primary residence. All product brand names used in this brochure are registered trademarks of Thor Industries, Inc. Unauthorized use of trademarks is prohibited by law.

rev.1D2/09

©2009 Thor Industries, Inc.



Dutchmen Manufacturing, Inc.  
 A division of Thor Industries

2164 Caragana Court ■ Goshen, Indiana 46526  
 Sales: 574-534.1224 ■ Fax: 574-975.0592