

*Laredo*  
By Keystone

# *Laredo*

*By Keystone*



MORE **BEST IN CLASS** FEATURES THAN COMPETITION!







# *Laredo*

**By Keystone**





# BEST IN CLASS

## BEST IN CLASS... BEST IN VALUE.

***With Laredo, this is more than a slogan*** – it's a strategy that guides us every day as we aspire to create the perfect RV. Where does this strategy come from? It's from you, our customer. Each model is designed to maximize livability, comfort, and storage while giving you the best value on the market. Our elegant interiors feature glazed maple cabinetry and rich decors, giving you all the comforts of home. Attention to detail, quality, and value are what truly make Laredo Best in Class. You'll see it the minute you walk in the door.

- A.** Laredo's new Stor-Mor Kitchen features angled overhead cabinets and more storage than anyone in it's class.
- B.** Durable and stain resistant Beauflor® flooring.
- C.** 26" LCD TV's can be viewed from both the living area and bedroom on many models.
- D.** Ball bearing full extension drawer guides will handle heavy loads.



**A**



**B**



**C**



**D**





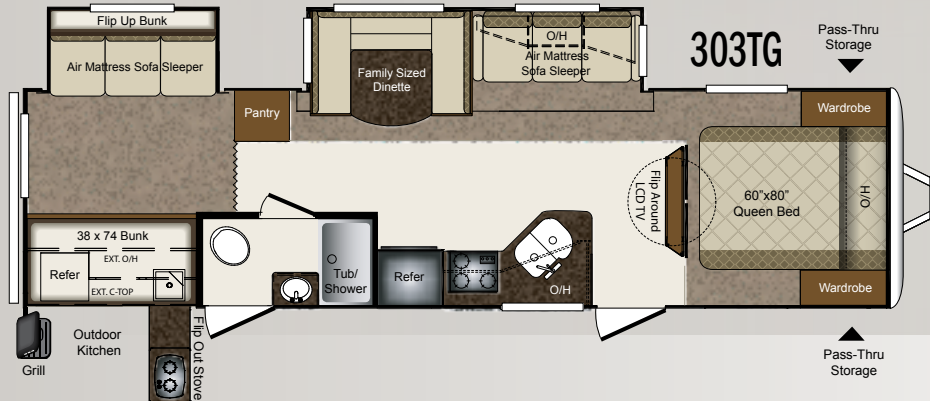
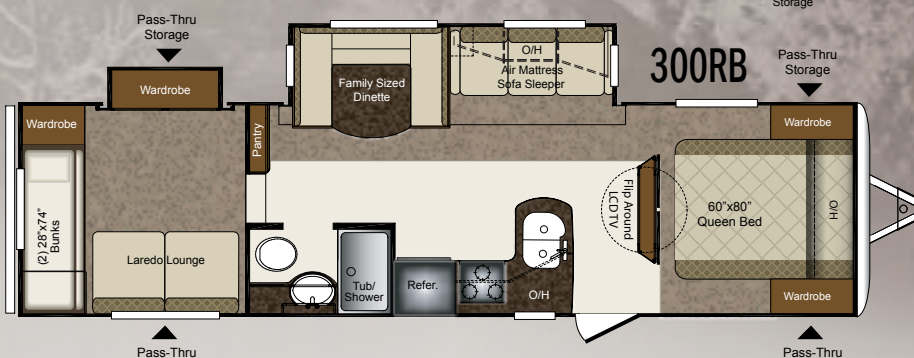
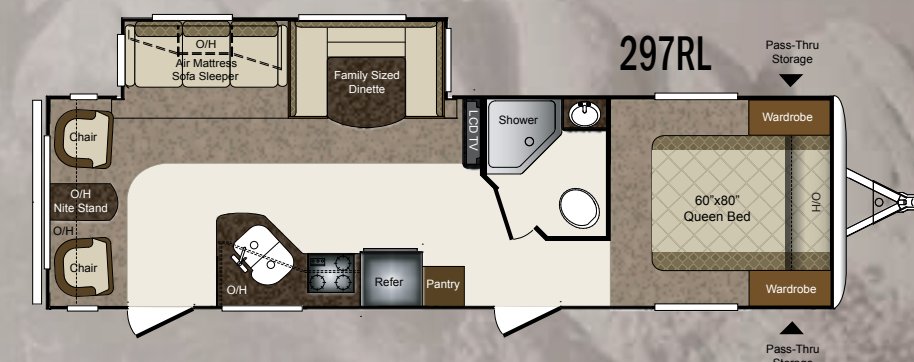
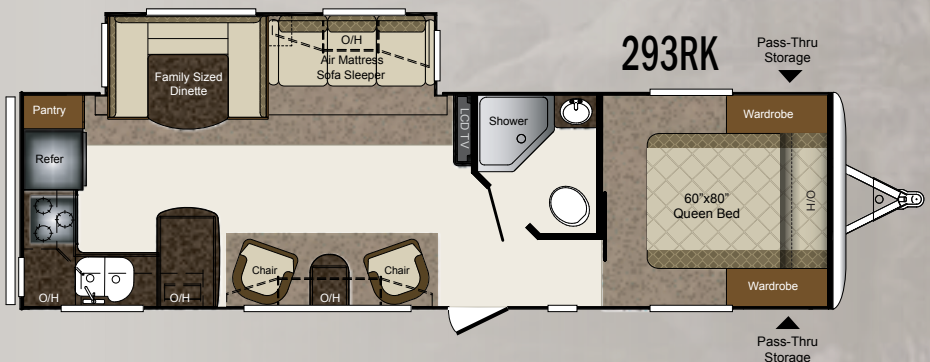
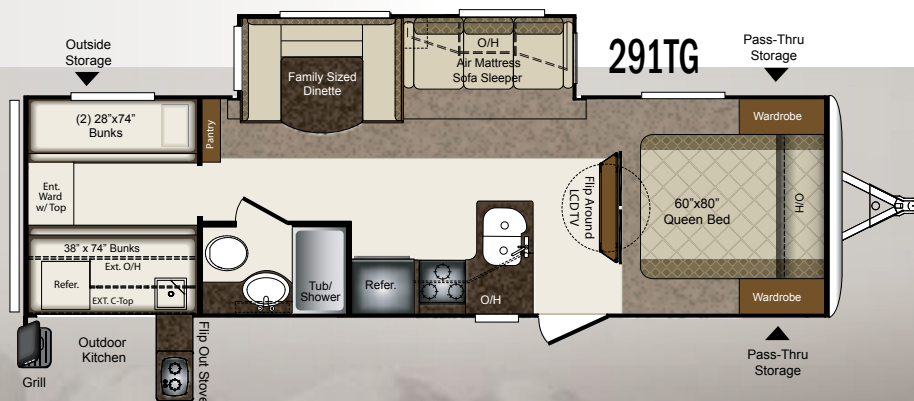
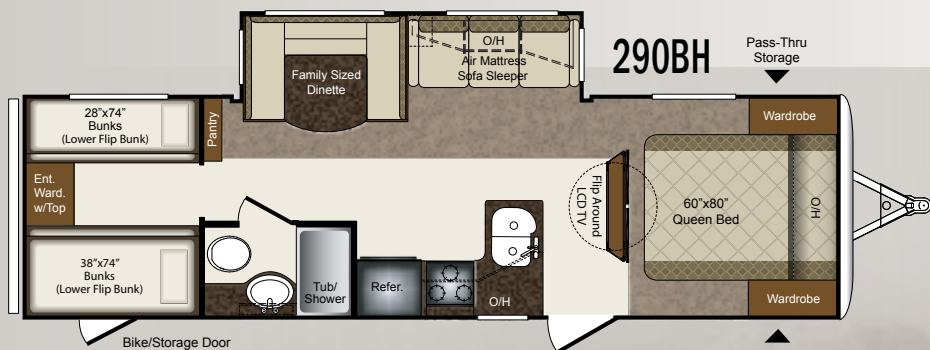
- |   |  |                                      |
|---|--|--------------------------------------|
| 1 Gel Coated Filon Exterior             | 9 2nd Layer Floor Decking with Staggered Seams | 20 5" Crowned / Stamped Roof Trusses |
| 2 Luan Layer                            | 10 Hi-Density Block Foam Insulation            | 21 Sloped Slide Roof                 |
| 3 Hi-Density Block Foam Insulation      | 11 Aluminum Floor Studs                        | 22 Wiper Seals                       |
| 4 Interior Wallboard                    | 12 3rd Layer Floor Decking                     | 23 Bulb Seal in T-Track              |
| 5 Total Aluminum Frame                  | 13 Moisture Barrier Wrap                       | 24 Air Glyde Front Cap w/LP Storage  |
| 6 Residential Grade Carpet and Linoleum | 14 Fiberglass Batten Insulation                | 25 EZ Lube Axles                     |
| 7 Carpet Padding                        | 15 Underbelly Heat Duct                        | 26 Equa-Flex Suspension System       |
| 8 1st Layer Floor Decking               | 16 PACO I-Beam Frame                           | 27 Radial Tires                      |
|   | 17 One Piece Rubber Roof                       | 28 Radius Entry Steps                |
|   | 18 Roof Decking                                |                                      |
|   | 19 R-11 Insulation                             |                                      |



Laredo front caps are designed to aggressively deflect wind from all angles (see FIGURE A). With a 20% more aerodynamic front cap, wind drag is reduced and fuel mileage is increased.

AIR GLYDE TECHNOLOGY





MODEL	290BH	291TG	293RK	297RL	298RE	300RB	303TG
SHIPPING WEIGHT	6200 lbs.	6595 lbs.	6469 lbs.	6330 lbs.	7035 lbs.	7160 lbs.	7500 lbs.
CARRYING CAPACITY	1700 lbs.	1605 lbs.	2031 lbs.	1870 lbs.	1965 lbs.	1840 lbs.	1500 lbs.
HITCH WEIGHT	725 lbs.	785 lbs.	650 lbs.	675 lbs.	840 lbs.	1020 lbs.	840 lbs.
LENGTH	33'	33'	33' 10"	33' 6"	34' 2"	35' 5"	35' 5"
HEIGHT	10' 11"	10' 11"	11' 1"	10' 11"	11' 1"	11' 5"	11' 1"
FRESH WATER	43 gal.	43 gal.	43 gal.	43 gal.	43 gal.	43 gal.	43 gal.
WASTE WATER	30 gal.	30 gal.	30 gal.	30 gal.	30 gal.	30 gal.	30 gal.
GRAY WATER	30 gal.	30 gal.	60 gal.	30 gal.	30 gal.	30 gal.	30 gal.



**EXTERIOR**

- Fully enclosed underbelly
- Heated, enclosed holding tanks and gate valves
- Oversized lighted pass-thru storage
- Exterior shower w/hot & cold
- Exterior marine grade speakers
- Rain gutters w/downspouts
- Security light
- Entrance door light
- Triple entrance steps
- Outside 110V outlet and TV connection
- Folding entry assist handle
- Lighted entry steps

**Walls-R-7**

- Welded, aluminum framed sidewalls and endwalls
- Laminated, gel-coated Filon
- Solid block foam insulation

**Floor-R-14**

- 1 piece laminated floor
- Moisture barrier underbelly
- Underbelly is enclosed with one-piece fluted polypropylene
- Note: Underbelly heated by furnace

**Roof-R-11**

- 5" Stamped steel, radius truss rafters on 16" centers
- 3/8" roof decking — Full walk-on!
- One-piece EPDM rubber roof with insulated, A/C duct

**Tires & Chassis**

- Powder-coated I-beam frame
- Tube style bumper w/sewer hose storage
- Electric slideout system w/manual override
- Radial tires
- EZ lube axles
- Electric brakes
- Full-size spare tire

**INTERIOR****Living Area**

- U-shaped dinette w/storage below
- Adjustable "Komfort Kollapse" dinette table
- Ventilating windows on slideout end walls
- Overhead cabinets in slide rooms
- Residential grade carpet & padding
- Stain resistant fabrics
- Pleated fabric shades
- Designer window treatments
- Raised panel mortise & tenon cabinet doors
- Entertainment center w/TV cabinet

**Kitchen**

- Residential-size overhead cabinets
- Sink cover
- 60/40 deep-bowl sink
- Metal high-rise faucet
- Linoleum floor
- Ball bearing full extension drawer guides

**Bathroom**

- Oversized tub/shower
- Tub surround w/shelves
- Foot pedal flush toilet
- Residential-size bath sink
- Medicine cabinet
- Skylight over bath
- Power roof vent

**Bedroom**

- 60" x 80" innerspring mattress
- Bedspread w/matching headboard
- Wardrobe storage
- TV hook-up
- Reading lights

**Appliances**

- 12V AM/FM/CD/DVD home theater system w/ surround sound effect speakers
- Double door refrigerator
- Microwave with carousel
- Range hood and light
- 13,500 BTU ducted A/C
- High output range w/auto igniter

**Utilities**

- 2-30lb LP bottles w/auto changeover
- 30,000 BTU high-output furnace w/auto ignition
- 6 gallon gas/electric DSI hot water heater
- Water heater bypass kit
- Systems monitor panel
- Cable & satellite connections
- 55-AMP power convertor
- 30-AMP power cord
- Black tank flush

**Safety**

- Break away switch
- Tinted safety glass windows
- GFI receipts
- Carbon monoxide detector
- Smoke alarm
- Propane gas leak detector
- Fire extinguisher

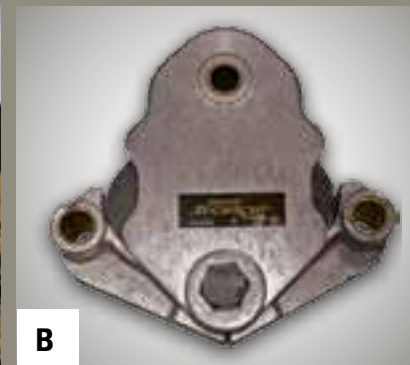
**OPTIONAL EQUIPMENT**

- 15,000 BTU ducted A/C
- Free standing dinette w/4 chairs
- Canadian certification

**BEST IN CLASS PACKAGE (ALL TT's)\***

- Power tongue jack
- Adjustable electric awning
- 26" LCD HD TV (298-32" LCD HD TV)
- (4) Electric stabilizer jacks
- Equa-Flex suspension system
- Aluminum wheels
- Air mattress sleeper sofa w/storage below
- Glacier Package
- Fiberglass front cap w/LP storage
- Residential glazed maple cabinet doors
- Stor-Mor kitchen cabinets
- Deluxe exterior graphics

\*Mandatory Package

**TRAVEL TRAILER TOP FEATURES****A****B****C****D****E**

**A.** Air Glyde front cap with integrated LP storage reduces wind drag while increasing turning radius and fuel efficiency

**B.** Equa-Flex rubber suspension system provides a smoother ride on any road

**C.** Enjoy the outdoors while entertaining with Laredo's Outdoor Camp Kitchen with swing-around grill

**D.** 15" Aluminum alloy wheels offer upgraded style while reducing weight

**E.** Standard power tongue jack makes hooking up quick and easy





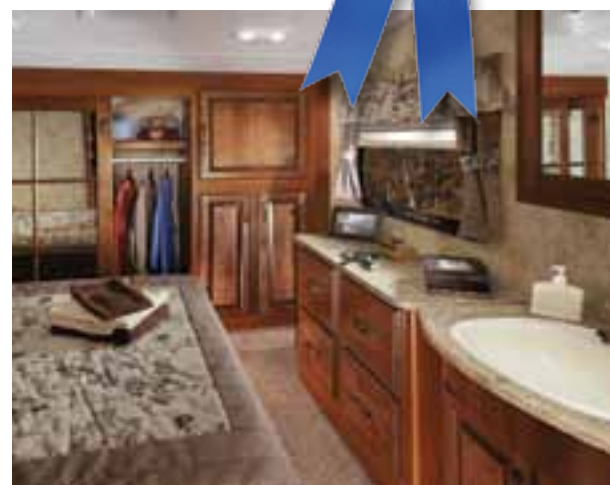
# BEST IN CLASS FIFTH WHEELS



266RL FIFTH WHEEL | SHOWN ABOVE IN OLIVE DECOR



266RL KITCHEN



266RL MASTER BEDROOM





## MAX TURN TECHNOLOGY

When given the challenge of creating a Recreational Vehicle that maximizes turning radius, reduces fuel consumption and tows great on the worst of roads, Laredo engineers utilized MAX TURN TECHNOLOGY to create a fifth wheel that has become the benchmark for Hi-Performance Towing.



Laredo's state of the art fiberglass cap features increased fuel economy while towing, also includes Hitch Vision and docking lights which allow customers to hook-up with ease.



## SUPER SPORT SUSPENSION

Laredo's Super Sport Suspension will absorb all the "shock waves" created by potholes and other road irregularities. Equipped with larger heavy duty 12" brakes, Laredo can be stopped easily when braking.

- A.** Equa-Flex rubber suspension with heavy duty axles
- B.** Radial tires and aluminum wheels provide both safety and a sporty look
- C.** Heavy duty 12" electric brakes



**A**



**B**



**C**



### WALL CONSTRUCTION (R-9)

1. Gel-coated fiberglass exterior
2. 1/8" Luan wood backer
3. Hi-density block foam insulation
4. Radius window corner blocks
5. 2" Welded aluminum sidewall studs
6. Fiberglass batten insulation
7. High-gloss front fiberglass cap
8. Metal backing strips

### ROOF CONSTRUCTION (R-28)

9. One-piece EPDM rubber roof with 12-year warranty
10. 3/8" Fully walkable roof decking
11. Fiberglass batten insulation - 2 layers
12. Heat reflective Astro foil insulation
13. 5" "Snow Load" roof trusses
14. 1/8" Ceiling decking with vinyl protection
15. Vented attic

### FLOOR CONSTRUCTION (R-30)

16. Residential grade carpet with stain protection
17. Residential grade carpet padding
18. 5/8" Seamless wood floor decking
19. Residential grade carpet and linoleum
20. In-floor ducted heat
21. Darco wrap (main floor)
22. Astro foil bubble insulation
23. Fiberglass batten insulation - 2 layers
24. One-piece, fluted polypropylene fully enclosed sub-floor
25. 3" floor joists on 16" centers
26. Therma Shield 37 holding tank enclosure

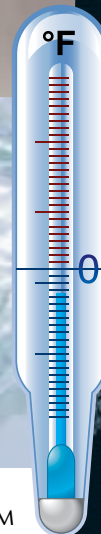
### TIRE & CHASSIS

27. 10" or 8" steel "powder coated" I-beam frame
28. 15" or 16" radial tires
29. EZ Lube axles

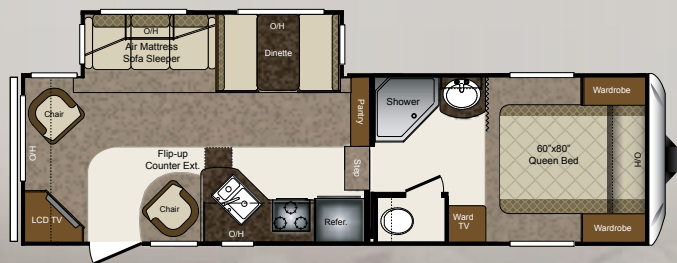


## EXPAND YOUR COMFORT ZONE

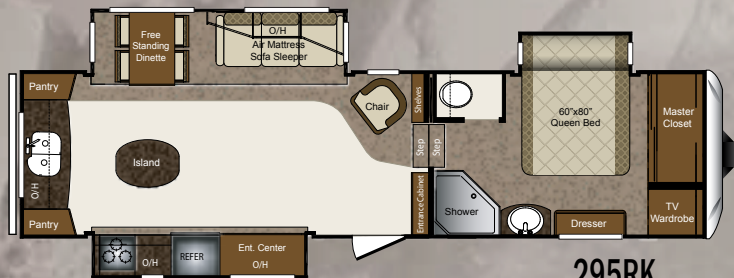
Laredo's exclusive Comfort Zone Climate System provides industry leading protection from extreme early and late season temperature variations. The 35,000 btu furnace, heated pass through storage area, and insulation values unmatched by our competition allow you to enjoy your Laredo a little longer each camping season.



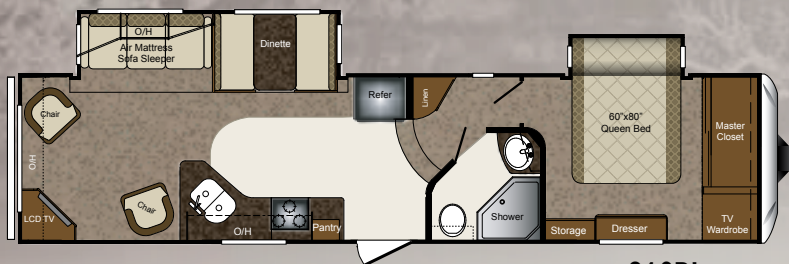




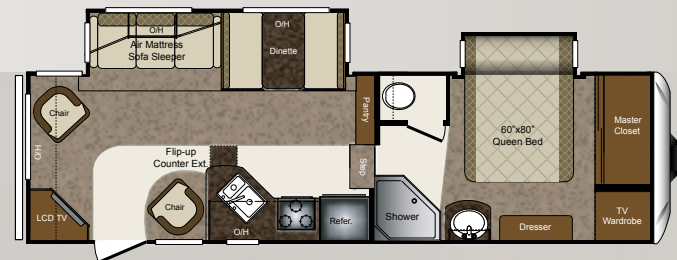
265RL



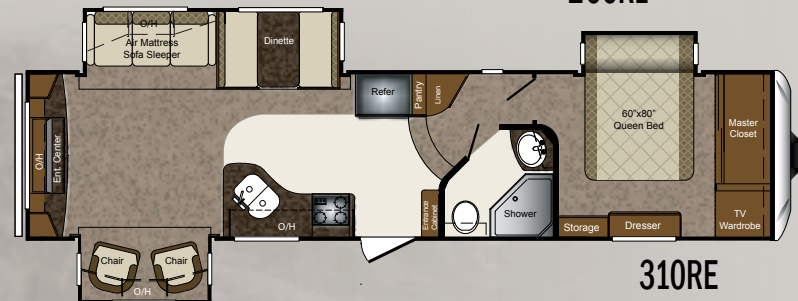
295RK



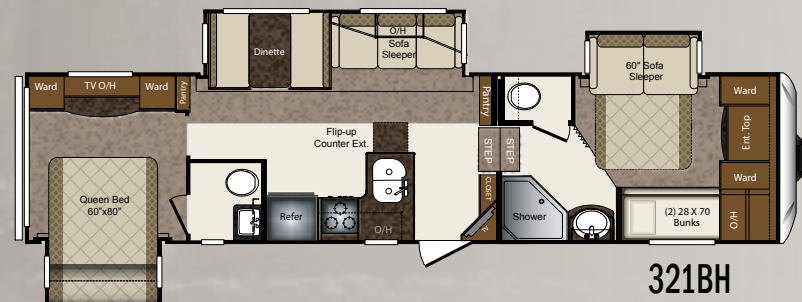
316RL



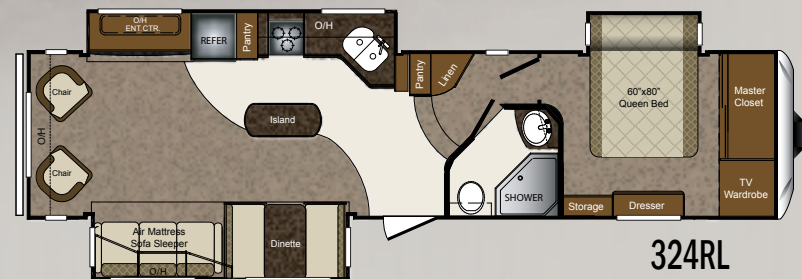
266RL



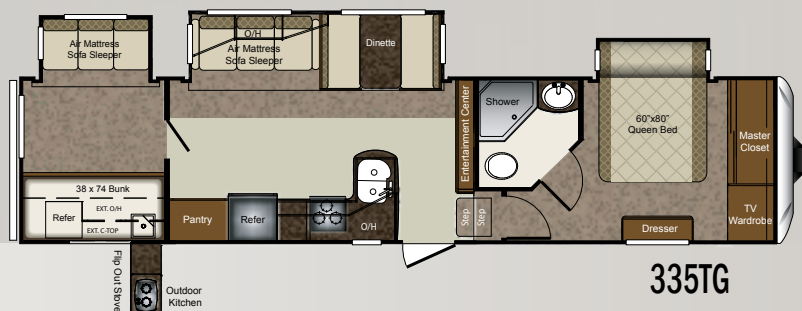
310RE



321BH



324RL



335TG

MODEL	265RL	266RL	295RK	310RE	316RL	321BH	324RL	335TG
SHIPPING WEIGHT	7774 lbs.	8283 lbs.	9560 lbs.	10204 lbs.	9437 lbs.	10228 lbs.	10355 lbs.	TBD
CARRYING CAPACITY	2877 lbs.	2717 lbs.	2940 lbs.	2796 lbs.	2563 lbs.	2776 lbs.	2670 lbs.	TBD
HITCH WEIGHT	1360 lbs.	1775 lbs.	1830 lbs.	1785 lbs.	1785 lbs.	1980 lbs.	2000 lbs.	TBD
LENGTH	30'	30' 5"	33' 10"	36'	35'	36'	36' 7"	TBD
HEIGHT	12' 4"	12' 4"	12' 7"	12' 7"	12' 7"	12' 7"	12' 7"	TBD
FRESH WATER	49 gal.	49 gal.	55 gal.	55 gal.	55 gal.	55 gal.	55 gal.	TBD
WASTE WATER	40 gal.	40 gal.	40 gal.	40 gal.	40 gal.	75 gal.	40 gal.	TBD
GRAY WATER	40 gal.	40 gal.	75 gal.	75 gal.	75 gal.	75 gal.	75 gal.	TBD



## FIFTH WHEEL TOP FEATURES



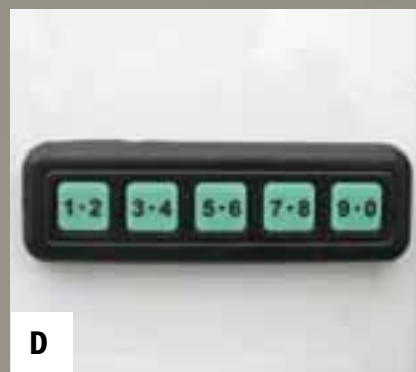
A



B



C



D

- A. Corian® countertops with matching sink cover and paired with upgraded metal high rise faucet
- B. Large heated pass through storage areas include roto-cast tubs for wet or greasy items
- C. Slam Latch pass-thru baggage doors
- D. Programmable keyless entry - Leave the keys behind while you enjoy a day hiking or at the beach!

### EXTERIOR

- Fully enclosed underbelly
- Heated, enclosed holding tanks & gate valves
- Oversized lighted pass-thru storage
- Roto cast storage for wet or greasy items
- Exterior shower w/hot & cold
- Fold away entry assist handle
- Exterior marine grade speakers
- Rain gutters w/downspouts
- Security light
- Entrance door light
- Rear ladder
- Triple entrance steps
- Electric front jacks w/adjustable snap pins
- Aerodynamic front cap w/Hitch Assist Mirror & 2 LED lights w/Max Turn Technology
- Outside 110V outlet & TV connection
- Lighted entry step

### Tires & Chassis

- Powder-coated I-beam frame
- Tube style bumper w/sewer hose storage
- Electric slideout system w/manual override
- Adjustable extended hitch pin
- Radial tires
- EZ lube axles
- 12" electric brakes
- Full-size spare tire

### INTERIOR

#### Living Area

- Extra wide dinette w/storage below
- 6'3" slide room height
- Ventilating windows on slideout end walls
- Overhead cabinets in slide rooms
- Residential grade carpet and padding
- Stain resistant fabrics
- Pleated day/night shades
- Designer window treatments
- Raised panel mortise & tenon cabinet doors
- Entertainment center w/TV cabinet

#### Kitchen

- Residential-size overhead cabinets
- Dual Corian sink covers
- Flip up Corian countertop extension (N/A 316, 295, 324, 335)
- 60/40 deep-bowl under-mount sink
- Metal high-rise faucet
- Linoleum floor
- Ball bearing full extension drawer guides

#### Bathroom

- Oversized shower w/glass door
- Tub surround w/shelves
- Porcelain foot pedal flush toilet
- Residential-size bath sink
- Medicine cabinet
- Skylight over bath
- Power roof vent

### Bedroom

- 60" x 80" innerspring mattress
- Bedspread w/matching headboard
- Wardrobe storage
- TV hook-up
- Reading lights

### Appliances

- 12V AM/FM/CD/DVD home theater system w/surround sound effect speakers
- Double door refrigerator w/wood inserts
- Microwave w/carousel
- Range hood and light
- 13,500 BTU ducted A/C
- 22" high output range w/auto igniter

### Utilities

- Easy access double 30lb. LP bottles w/auto changeover
- 35,000 BTU high-output furnace w/automatic ignition
- 6 Gallon gas/elec. DSI hot water heater (265, 266)
- Winter Guard winterizing kit
- Water heater bypass kit
- Systems monitor panel
- 55-AMP convertor
- 30-AMP power cord
- Cable & satellite hook-ups
- Black tank flush

### Safety

- LP gas leak detector
- Smoke detector
- Carbon monoxide detector
- Fire extinguisher
- 12" Electric brakes w/breakaway switch
- Safety glass windows

### OPTIONAL EQUIPMENT

- 15,000 BTU ducted A/C
- Free standing dinette w/4 chairs
- Canadian certification

### Best in Class Package (All FWs)\*

- Adjustable electric awning
- 26" LCD HD TV (295, 310, 324, 335 - 40")
- Electric rear stabilizer jacks
- Equa-Flex suspension system
- Aluminum wheels
- Air mattress sleeper sofa w/storage below
- Corian surface countertops (kitchen)
- Bus style slam baggage doors
- Comfort Zone Climate System
- Keyless entry system
- Deluxe exterior graphics
- Residential glazed maple cabinet doors

### Bigger is Better Package

(295, 310, 316, 321, 324, 335)\*

- 8 cubic foot refrigerator
- 12 gallon gas/electric DSI hot water heater
- 16"-8 lug aluminum wheels
- 6,000lb axles
- 50 AMP service
- Wire and frame for 2nd A/C

\*Mandatory Package





NEW EARTH



OLIVE



HAZELNUT

# BUY LOCALLY

## BUY FROM YOUR LOCAL DEALER

When it comes to giving you more for your RV camping dollar, no other brand can compare to Keystone. And Keystone RVs are built in the heartland of America.

When you select a new RV, working with the right RV dealer is important. We have you covered, there, too. With nearly 1000 dealer locations throughout the U.S. and Canada, you are never far from your local Keystone RV dealer.

## MORE **BEST IN CLASS** FEATURES THAN COMPETITION!



# Laredo

[www.keystone-laredo.com](http://www.keystone-laredo.com)

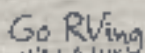
**By Keystone**

Your Local Dealer:



[www.keystonerv.com](http://www.keystonerv.com)

2642 Hackberry Drive | PO BOX 2000  
Goshen, Indiana 46527-2000  
(574) 535-2100



Look for our  
Walk Around Videos  
on our website!

Product information is as accurate as possible as of the date of publication of this brochure. Features, floor plans, and specifications are subject to change without notice. Please also consult Keystone's web site at [keystonerv.com](http://keystonerv.com) for more current product information and specifications. Tow Vehicle Disclaimer: CAUTION: Owners of Keystone recreational vehicles are solely responsible for the selection and proper use of tow vehicles. All customers should consult with a motor vehicle manufacturer or their dealer concerning the purchase and use of suitable tow vehicles for Keystone products. Keystone disclaims any liability or damages suffered as a result of the selection, operation, use or misuse of a tow vehicle. KEYSTONE'S LIMITED WARRANTY DOES NOT COVER DAMAGE TO THE RECREATIONAL VEHICLE OR THE TOW VEHICLE AS A RESULT OF THE SELECTION, OPERATION, USE OR MISUSE OF THE TOW VEHICLE. 4/2011

April 2011